



Skeena
Knowledge Trust

AUGUST 2023



Skeena Knowledge Trust
www.skeenatrust.ca

Highlights

Knowledge Mobilization Wins Accolades

The SKT was honoured as a REFBC Land Award finalist for our collaborative approach to information management.



Lake Ecology Workshop

The SKT facilitated a LakeKeepers Workshop in Smithers, BC, presented by the BC Lakes Stewardship Society and led by Norm Zirnhelt.



New Maps Support Land-Use Decisions

The newly upgraded Skeena Maps Portal is put through its paces to help show and communicate high-value ecosystem components and potential threats to salmon habitat.



Stream Temperature Dashboard Highlights Hotspots

The SKT's Upper Bulkley Water Temperature Dashboard gains attention with featured presentations at regional and federal conferences.



Reflection & Renewal

After 5 years of pioneering the development of an innovative data governance model and community data hub, the SKT will be updating our strategic plan with guidance from our stakeholders.



Knowledge Mobilization Wins Accolades



The SKT held several workshops and presentations across the Skeena in 2022 focusing on leveraging the Skeena Salmon Data Centre to store and share data for collaboration, public engagement, and storytelling. Workshops included tailored sessions with Gitksan Watershed Authority and Morice Water Monitoring Trust staff, an introductory session on the Pacific DataStream, and a featured presentation and Fisheries and Oceans Canada's Yearend Review. In June, we were honoured to have our innovative approach recognized by the Real Estate Foundation of BC when our Knowledge Mobilization Across the Skeena Watershed project was selected as a finalist for a REFBC Land Award out of many projects from across BC!



Lake Ecology Workshop

In June 2023, the Skeena Knowledge Trust facilitated a LakeKeepers Workshop, uniting a diverse group of attendees in Smithers, BC, to foster lake ecology awareness and environmental stewardship. Presented by the BC Lakes Stewardship Society (BCLSS) and led by Norm Zirnhelt, the workshop provided insights into lake chemistry, what happens during lake turnover, and water sampling techniques. Attendees engaged in hands-on activities, including collecting water samples and conducting ecological assessments at Tyhee Lake.

This workshop equipped participants with lake monitoring skills and empowered them to collect valuable data used to assess water quality trends, benefiting their communities. Currently, volunteers monitor Tyhee Lake, Lake Kathlyn, and Seymour Lake, with data accessible via the Skeena Knowledge Trust's "What's in my Watershed?" dashboards.

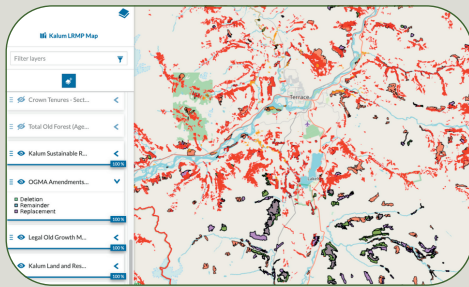
[Find out more about the Lake Ecology Workshop](#)



03

Skeena Maps Portal Featured Maps

The SKT builds interactive maps using over 200 different spatial layers hosted on the Skeena Maps Portal. Here are a few of our favourites.



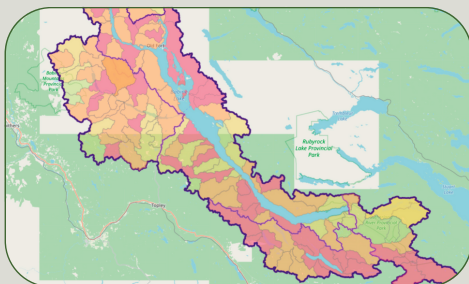
Kalum Land & Resource Management Plan Map

This map was prepared in partnership with the [Kalum Land & Resource Management Plan Implementation Committee](#) as a spatial planning and discussion tool to provide valuable data and context for the KLRMP PIC on Old Growth Management Area co-location.



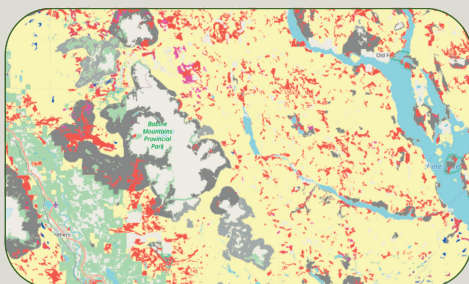
Glaciers, Mining Interests, and Potential Salmon Habitat in Northwest BC map

Featuring multiple glacier extent layers for comparison of glacial retreat over the last four decades, this map is set within the area of BC known colloquially as the “Golden Triangle” for its concentration of gold and copper mining interests. As glaciers retreat, new areas are uncovered, which could represent potential new salmon habitat as well as opportunities for increased mining exploration.



Watershed Stewardship Decision Support Tools

Watershed Stewardship Decision Support Tools were built in partnership with SkeenaWild Conservation Trust and Northern Habitat Solutions for the [Babine River](#), [Babine Lake](#) and [Kispiox River Watersheds](#). These maps feature land cover disturbance with respect to Peak-Flow Sensitivity thresholds for risk characterization at multiple watershed levels within each watershed.



Old Growth Maps

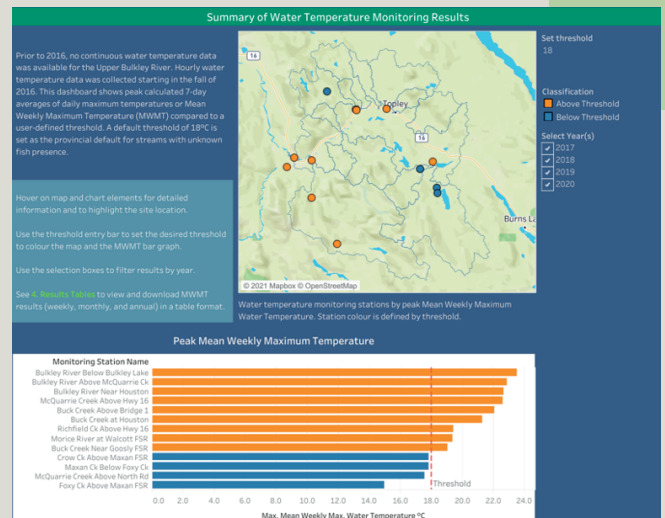
The [Old Growth Maps](#) on the Skeena Maps Portal are interactive versions of the maps produced by the [BC Old Growth Technical Advisory Panel](#). These maps show priority recommendation areas for harvest deferral based on the methodology developed by the Advisory Panel, with options to zoom in on particular areas of interest, query values at particular locations, and combine the layers with other spatial layers.

Find out more about our featured maps!



FOCUS ON:

Stream Temperature Dashboard Highlight Hotspots



The Upper Bulkley River watershed in northwestern British Columbia is an important salmon spawning habitat for fish species including chinook, coho, steelhead, and sockeye. Salmon have optimal temperature ranges for growth and survival that are lower than many other fish species and are expected to face increased challenges to survival as warmer temperatures and low water level conditions occur more frequently with the onset of climate change. To better understand fish habitat and inform mitigation strategies, Fisheries and Oceans Canada implemented a water temperature monitoring program in the Upper Bulkley River watershed in 2016.

In 2021, the SKT piloted the [Upper Bulkley River Water Temperature Monitoring Dashboard](#) – a multi-faceted interactive data visualization featuring stream water temperature monitoring results collected by Fisheries and Ocean Canada. The dashboard includes several pages ranging from high-level summaries to site-specific detail views. Filters allow for direct linkages between the map elements and the tables or charts, allowing users to gain an immediate sense of place and spatial distribution – something that can be challenging to convey through static figures.

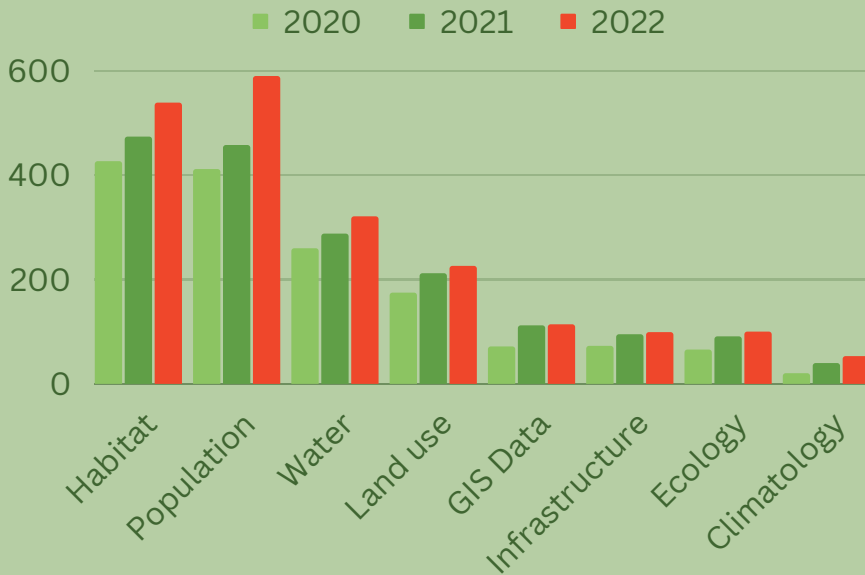
In 2022, the dashboard was featured at the Confluence of Minds conference which brought together over 100 regional representatives from First Nations, DFO, BC, NGOs, and other stakeholders as well as at the Canadian Cartographic Association's annual conference and the Upper Bulkley Roundtable's bi-annual meeting. Read more about the Upper Bulkley River Water Temperature Monitoring Dashboard in the [Winter 22-23 edition of Cartouche](#) or the [SKT's Case Study](#). The 2016-21 Data Report is also now available on the [Skeena Salmon Data Centre](#).

05

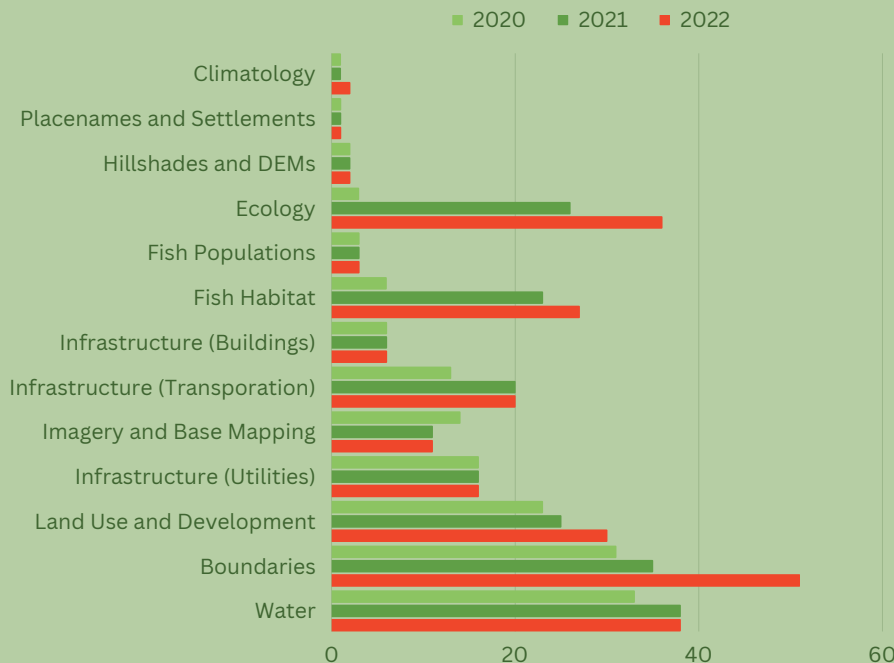
Data Insights

The Skeena Knowledge Trust is home to the Skeena Salmon Data Centre and the Skeena Maps Portal, the most comprehensive source of information on wild Pacific salmonids within the Skeena watershed.

Datasets in the SSDC by Category 2020–2022



Map Layers in the SMP by Category 2020–2022



SKEENA SALMON DATA CENTRE

3,019
RESOURCES

SKEENA MAPS PORTAL NUMBERS

256
LAYERS

59
MAPS

Find out more about our Knowledge Tools!



06

Reflection & Renewal

Over the past five years, since its official formation in 2017, the SKT has achieved significant milestones and made substantial contributions, including:

- Developing the governance structure and framework in the SKT trust agreement.
- Building and populating one of the first community data hubs.
- Partnering on community science monitoring programs with Water Rangers and the BC Lake Stewardship Society.
- Creating data visualizations, including for the Skeena Tyee Test Fishery and Wild Salmon Policy Indicator Analysis.
- Collaborating with partners to advance specific initiatives and enhance access to salmon-related information in the Skeena.

Looking forward, we are thrilled to have started 2023 with a fresh new look for our knowledge tools, including under-the-hood upgrades and security enhancements. We are now taking the opportunity to reflect, rejuvenate, and build out a strategic plan for the next 5 years. To help ensure we are continuing to meet information needs in a changing landscape, we are looking to you – our community of researchers, knowledge keepers, resource managers, funding partners, and friends of Skeena salmon – to provide us with your thoughts and insight on where we should be focusing our efforts by completing our strategic planning survey.

SKT STRATEGIC PLANNING SURVEY



For extra motivation, survey respondents will have a chance to win a much sought-after SKT hoodie or ball cap!

07



Get in Touch

Contact information

Address

Unit 102, 3423, Fulton Avenue,
PO Box 5219
Smithers, BC. V0J 2N0

Call

(250) 847 5665

Email

info@skeenatrust.ca

Website

www.skeenatrust.ca

Follow our socials :
@skeenatrust



SHOW YOUR SUPPORT BY DONATING TODAY!



Wild Salmon
Ecosystems Fund



Community
Salmon
Program

